



Dual Capacity-Building Framework: Building Strong School-Family Partnerships



Tennessee Technical Assistance Network (TN-TAN)

TN-TAN provides school districts, administrators, educators, and families access to free high-quality training, resources, and supports designed to improve outcomes for students with disabilities, ages 3–22. See below for our areas of support and the partners who lead the specific support areas:

- **Assistive Technology:** Assistive Technology Project for Education (ATP)
- **Autism Supports:** TRIAD at Vanderbilt
- **Family Engagement:** The Arc Tennessee
- **Intensive Behavior:** TRIAD at Vanderbilt
- **RTI²-A+B:** Tennessee Tiered Supports Center
- **Secondary Transition:** Transition Tennessee (TransitionTN)

[Visit the TN-TAN website](https://tn-tan.tnedu.gov) for more information: <https://tn-tan.tnedu.gov>.



Regional Family Engagement Specialists

Annette Graves



Megan Cobb



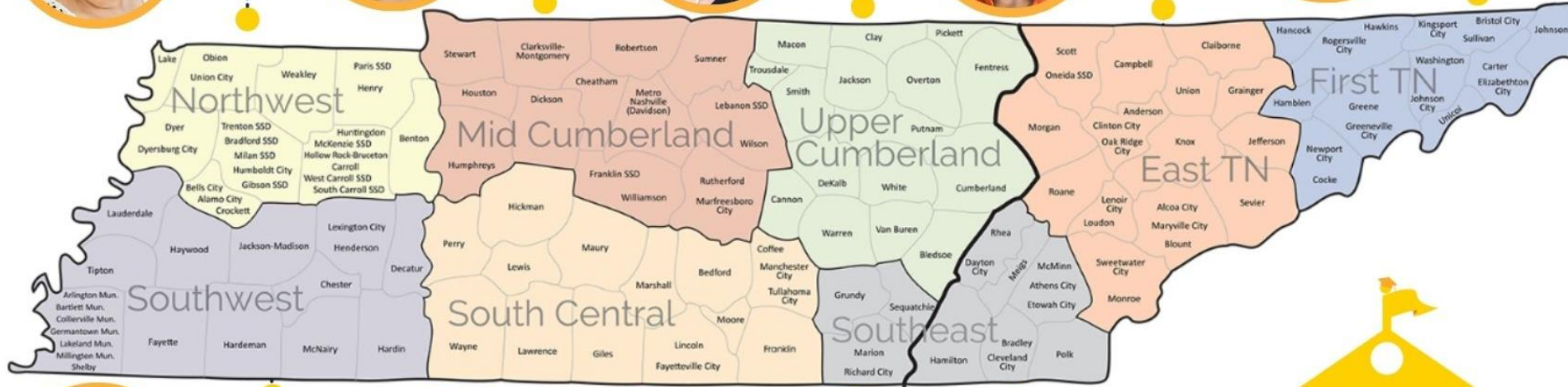
Kristie Irvin



Emily West



Allison Martin



Sandra Hawkins



Beth Harrison



Angie Cutrell



**FAMILY ENGAGEMENT
IN SPECIAL EDUCATION**



[Family Engagement Website \(https://familyengagementtn.com/team/\)](https://familyengagementtn.com/team/)



Disclaimer: Permissions

Permission is granted to use and copy these materials for noncommercial educational purposes with attribution credit to the Tennessee Department of Education. If you wish to use these materials for reasons other than noncommercial educational purposes, please contact the Office of General Counsel at (615) 741-2921.



Disclaimer: Generative AI Tools

The State of Tennessee does not currently permit the use of generative AI tools (e.g., Otter, Fireflies) in meetings hosted on state resources. Meetings with contractors, vendors, and subrecipients are not public meetings and may involve discussion of protected state data. Generative AI tools are not adequately regulated and are designed to train on data that is collected and may misrepresent data or release protected data to the general public.

While the state supports your desire to maintain documentation of the meeting and what you learn, please respect our decision to safeguard information and do not attempt to use tools such as these. If you choose to use a tool such as these, the state will block such tools from the meeting.



Disclaimer: External Resources

The resources and opinions shared have not been vetted by the Tennessee Department of Education and are not an endorsement on the quality or content of these materials or any vendor.



Disclaimer: Guest Speakers

- As part of this event, TN-TAN will be hosting guest speakers who may be sharing or promoting specific ideas or resources. We hope these resources will be helpful to event participants to use and adapt for noncommercial educational purposes.
- If applicable, please provide attribution where appropriate and work with your district team and legal counsel to review and implement in alignment with board and/or school policies for selecting and using materials.
- The resources and opinions shared have not been vetted by the Tennessee Department of Education and are not an endorsement on the quality or content of these materials or any vendor.



Objectives

- Define family partnerships.
- Explore how to improve family partnerships.
- Analyze the impact of improved family partnerships for educators, families, and students.
- Discuss challenges and learn successful strategies.



Family-Professional Partnership

What does the term “**family-professional partnership**” mean to you?





Special Education Experience for Families and Students

How would better family partnerships improve the **special education experience for families and students?**



Another Perspective

As an educator, how would improving partnerships with families **help you do your job better and reach your intended outcomes?**

Importance of Family Partnerships

Family partnerships:

- benefit student outcomes at all levels,
- improve all aspects of state aligned goals,
- improve Annual Performance Report (APR) Indicator 8 scores, and
- lead to improved postsecondary independence and self-advocacy for students.



Annual Performance Report (APR) 22-23

In FFY 2022, 85.66% of respondent parents reported that schools facilitated parent involvement for children with disabilities, showing slight improvement from FFY 2021 but falling short of the 90.04% target.

Number of respondent parents who report schools facilitated parent involvement as a means of improving services and results for children with disabilities	Total number of respondent parents of children with disabilities	FFY 2021 Data	FFY 2022 Target	FFY 2022 Data	Status	Slippage
5,512	6,435	84.25%	90.04%	85.66%	Did not meet target	No slippage

Source: [Tennessee Department of Education, State Performance Plan / Annual Performance Report: Part B \(22-23\)](https://tinyurl.com/4f3zzpt3)
(<https://tinyurl.com/4f3zzpt3>)



Family Engagement Principles

“By actively soliciting student and family involvement and engaging with community stakeholders, schools can build support for positive education and health programs.” (Tennessee Department of Education)

Fundamental principles:

- Reject deficit-based views of families.
- Co-design the model of engagement.
- Position family engagement as a core element of effective and equitable educational practice.

Source: [Tennessee Department of Education: Student, Family and Community Involvement](https://www.tn.gov/education/districts/health-and-safety/family-community-engagement.html) (https://www.tn.gov/education/districts/health-and-safety/family-community-engagement.html)

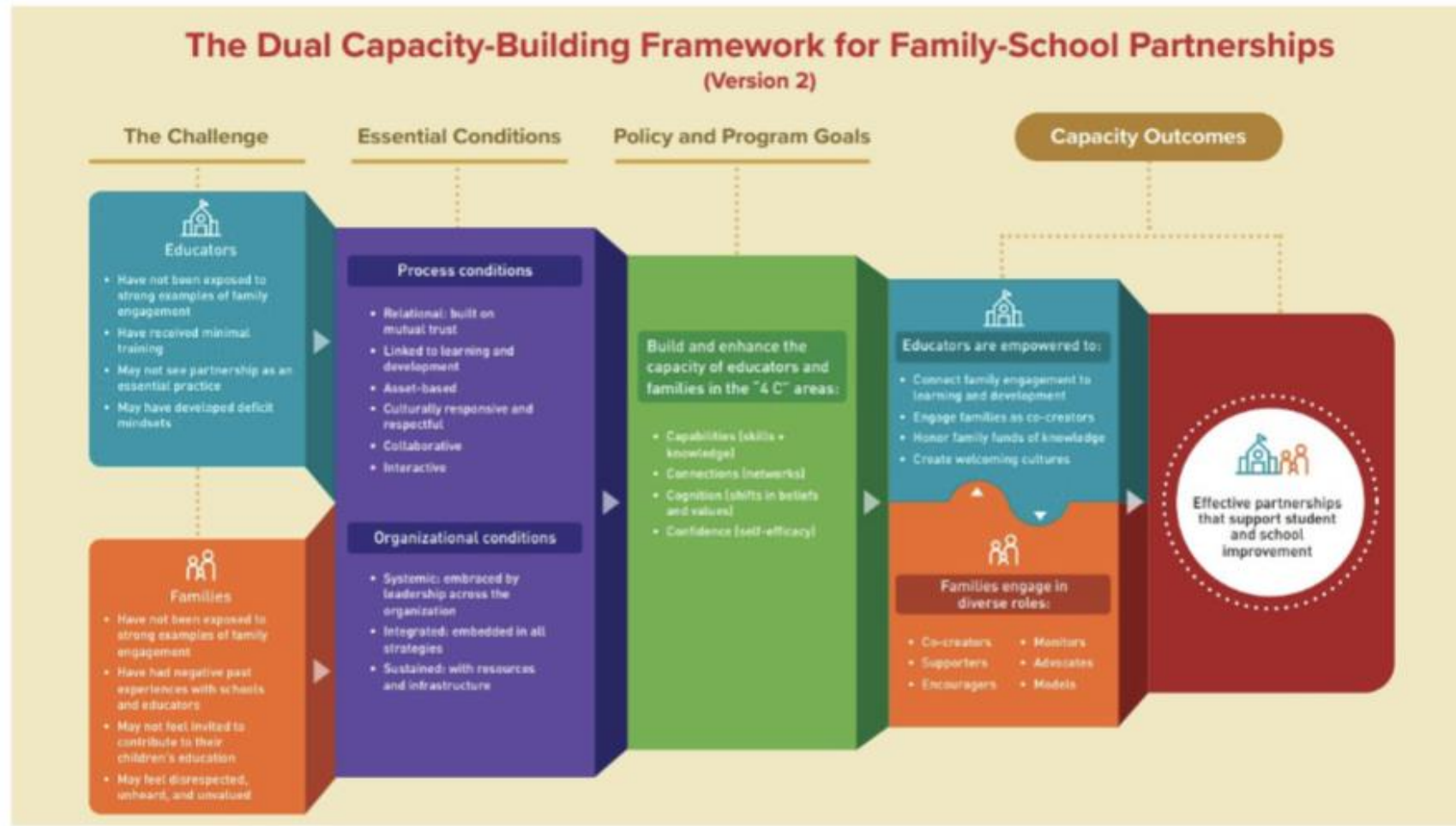
Video- Dual Capacity Explained



Source: [The Dual Capacity-Building Framework for Family-School Partnerships | Version 2](https://www.youtube.com/watch?v=QpCnXnO-cO8)
(<https://www.youtube.com/watch?v=QpCnXnO-cO8>)



Dual Capacity-Building Framework Visual



Source: [Dual Capacity](https://tinyurl.com/537tkpd2)
(<https://tinyurl.com/537tkpd2>)

Dual Capacity-Building Framework

Build and enhance the capacity of educators and families in the “4 C” areas:

Capabilities
(skills +
knowledge)

Connections
(networks)

Cognition
(shifts in belief
and values)

Confidence
(self-efficacy)

Source: [Policy and Program Goals](https://www.dualcapacity.org/framework-in-depth/policy-and-program-goals) (https://www.dualcapacity.org/framework-in-depth/policy-and-program-goals)



Any additional thoughts?

- How would better family partnerships improve **the special education experience for families and students?**
- As an educator, how would improving partnerships with families **help you do your job better and reach your intended outcomes?**



It's not always easy.

What **challenges** do you face in building **effective partnerships with families**?

Please share strategies, tools or collaborations that you have found successful in building partnerships with families.



Family Engagement in Special Education

How can we help?



Family Engagement Services

- Family Engagement workshops
- Parent support groups
- Parent Advisory Councils
- Transition fairs
- Parent IEP support
- Community conversations
- Professional development workshops



Family Engagement Workshops

Family engagement workshops equip families with the skills and resources to advocate on behalf of their child. These workshops cover topics such as:

- basics of the IEP,
- conflict resolution,
- diploma options, and
- student-led IEP meetings.



Parent Support

Our team offers free support to parents facing challenges with special education services for their students. We are here to answer questions, connect parents with resources, and explain processes and explain and navigate special education processes.

Reach out to your regional family engagement specialist or

[email The Arc TN](mailto:specialeducation@thearctn.org)

(specialeducation@thearctn.org).



Transition Fairs



Transition fairs connects students and families to resources that prepare them for successful lives after high school.

Research on transition practices shows that collaboration among the following leads to improved postsecondary outcomes for students with disabilities:

- educators,
- families,
- students,
- community members, and
- organizations.

Community Conversations



Community Conversations invite stakeholders in special education to collaborate and provide feedback on improving family engagement. This input is reported to the Tennessee Department of Education to guide their support and development of resources to be shared with districts.

Professional Development

Our Family Engagement team is available to collaborate with schools and districts, offering training on various topics related to special education. We can help **train teachers and support personnel** to:

- Better engage with families of students with disabilities,
- Understand APR Indicator 8 on parental involvement, and
- Appreciate family perspectives to build partnerships that improve student outcomes.



Testimonial

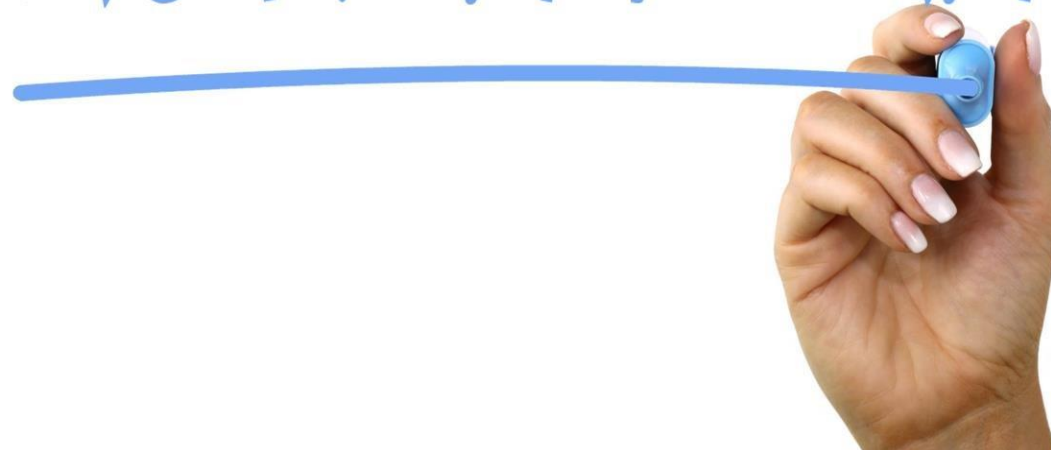
Maria Griego,
Executive Director of
Student Support Services
Williamson County Schools



Action Plan

Create an action plan outlining the strategies and initiatives you will implement to enhance family engagement within your school or district.

ACTION PLAN





Resources

- TN-TAN partners: <https://tn-tan.tnedu.gov/>
- 2023 Annual Performance Report: <https://www.tn.gov/education/families/student-support/special-education/special-education-data-services-reports.html>
- Dual Capacity Framework: <https://www.dualcapacity.org>

Questions?



Family Engagement Website



- [Family Engagement Website](https://familyengagementtn.com/) (https://familyengagementtn.com/)



Office Hours for Educators

- Have questions about Family Engagement in Special Education (FESPED) training?
- Want to connect with a specialist to talk about increasing family engagement to improve outcomes for students with disabilities?

Join FESPED's office hours on the first Wednesday of each month from 3 - 4 p.m. CT.

To join the Zoom scan the QR code or use the [Office Hours Zoom link](https://us02web.zoom.us/j/87197083693) (https://us02web.zoom.us/j/87197083693).



Connect with us!



(800) 835-7077



[The Arc TN Email](mailto:specialeducation@thearctn.org)

(specialeducation@thearctn.org)



[Family Engagement Website](https://familyengagementtn.com/)

(https://familyengagementtn.com/)



[Family Engagement Facebook](https://www.facebook.com/fespedtn/)

(https://www.facebook.com/fespedtn/)



[Family Engagement Instagram](http://www.instagram.com/fespedtn)

(http://www.instagram.com/fespedtn)

